

# EMSIPLUS

Fluids master knowledge

## FILLING AND DOSING VALVES

### Operation of a dosing valve

The multi flow valve allows to proportion all liquids from low to very high viscosity. The spring return pneumatic jack integrated, allows to obtain a coarse flow and a fine flow (possibility of one 3rd flow).

Connected to a weighing system, it ensures an excellent repetitivity of proportioning, the precision being relating to the level of the balance

The dosing valve is generally dedicated to proportion a single product.

### Operation of a filling valve

The filling valve allows to fill and proportion various types of products.

The valve is made up of a spring return pneumatic jack 2 positions, closing for lack of air, and of a filling nozzle which is easily dismountable for cleaning during a change of product.

The valve is equipped with thread cutter nozzle, or sub-level cane for the filling of foaming products.



Valves

Filling and dosing



## Characteristics of a dosing valve

- DN8 to DN50 range with or without recirculation
- Parts in contact with the product in stainless steel 316L and PTFE
- 316L stainless steel or PTFE nozzle with thread cutter
- Spring return pneumatic jack integrated in the body of the valve
- Connections : diameter welding nipple corresponding
- Recirculation until in the valve for the products which decant
- Possibility of controlling the valve by a solenoid valve (see wiring diagram)
- Reduced dimensions for proportioning directly in packing
- 6 bar compressed air supply on 1/8" connections :
  - 6 bar for the coarse flow
  - 3 bar for the fine flow
- Maximum operating pressure : 2 bar
- PN16 for DN8 to 32 valves and PN10 for DN40 to DN50 valves

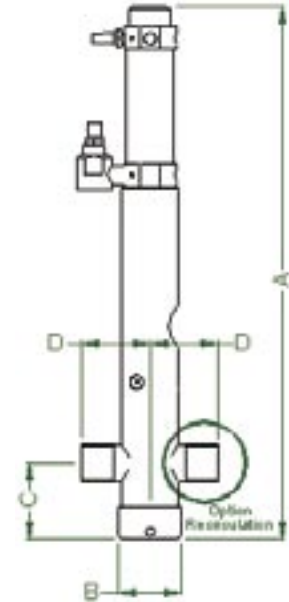
## Characteristics of filling valves

- Parts in contact with the product in stainless steel 316L and PTFE.
- Single pneumatic jack closing for lack of air.
- Easily dismountable nozzle for cleaning or change of diameter.
- Connections :
  - valves without plunging cane :
    - DN12 to DN36 : welding nipple DN32.
    - DN50 to DN100 : welding nipple corresponding DN.
  - valves with plunging cane :
    - DN12 to DN36 : welding nipple DN32.
- Piloting of the valve by two solenoid valves.
- 6 bar compressed air supply on 1/8" connections.
- Maximum operating pressure :
  - 2 bar with single acting supply.
  - 4 bar with double acting supply.
- PN16 for DN12 to DN36 valves and PN10 for DN50 to DN100 valves.
- **DN12 to DN100 range for buckets filling.**
  - filling over the level.
  - 316L stainless steel nozzle with thread cutter:
- **DN12 to DN36 range for cans and drums filling.**
  - small length cane for filling over the level.
  - plunging cane for filling under the level.
  - PTFE nozzle.

**Dimensional table for valve with or without recirculation**

DN	A (mm)	B (mm)	C (mm)	D (mm)
8	315	45	45	50
12	315	45	45	50
15	315	45	45	50
20	460	80	60	60
25	460	80	60	60
32	460	80	60	60
40	560	95	70	70
50	560	95	70	70

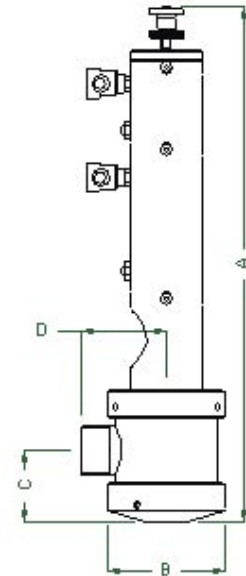
Noncontractual dimensions



**Dimensional table for filling valves**

DN	A (mm)	B (mm)	C (mm)	D (mm)
<b>Valve without plunging cane</b>				
12	410	80	70	65
15	410	80	70	65
25	410	80	70	65
32	410	80	70	65
36	410	80	70	65
50	520	95	70	80
80	580	150	100	115
100	580	195	100	140

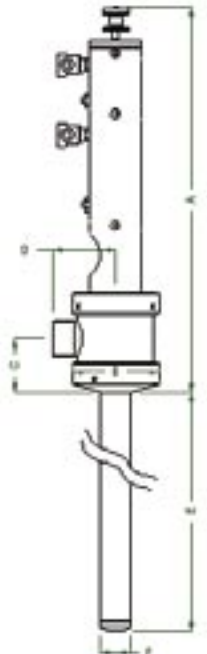
Noncontractual dimensions



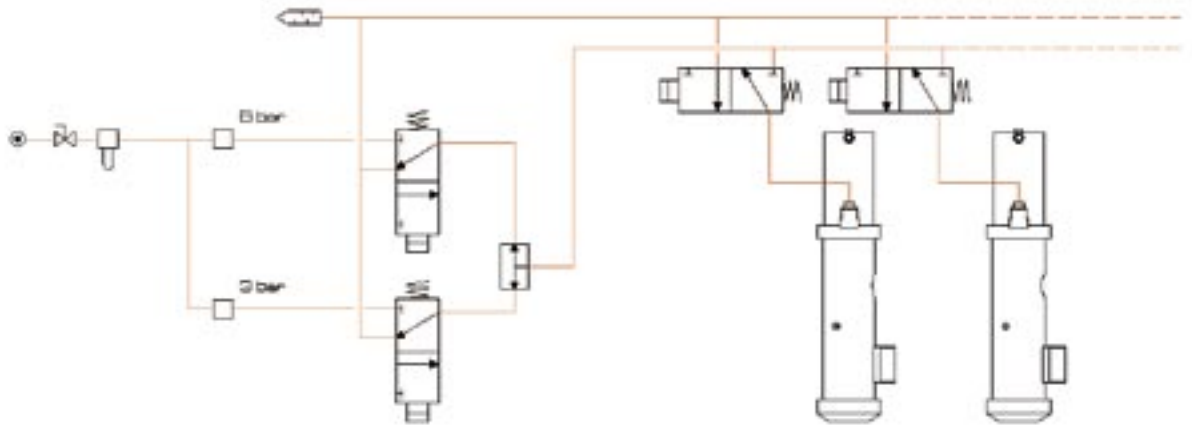
**Dimensional table for filling valves**

DN	A (mm)	B (mm)	C (mm)	D (mm)	E (mm)	F (mm)
<b>Valve with plunging cane</b>						
12	440	100	62	75	500	16
15	440	100	62	75	500	20
25	440	100	62	75	1200	30
32	440	100	62	75	1200	36
36	440	100	62	75	1200	40

Noncontractual dimensions



## Electropneumatic wiring



**EMSIPLUS** can also provides the turn-key equipments following:

**G**RAVIMETRIC FILLING MACHINES

**D**ISPENSING MACHINES



**Emsiplus**  
La maîtrise des fluides

23 rue Aristide Briand

**90300 OFFEMONT** (France)

Tél. : +33 (0)3.84.58.54.03 | Fax : +33 (0)3.84.58.54.18

contact@emsiplus.com | www.emsiplus.com